

Stunning, Move-In-Ready Gem in a Lovely Boutique Building!



1112 Spruce St #5, Philadelphia, PA 19107

- » Beds: 3 | Baths: 2 Full, 1 Half
- » MLS #: PAPH2448746
- » Condominium | Lot: 1,786 ft²
- » Spacious bi-level condo with oak hardwood floors and abundant natural light.
- » Kitchen boasts black granite countertops, high-end appliances, and custom storage.
- » More Info: 1112SpruceSt5.com



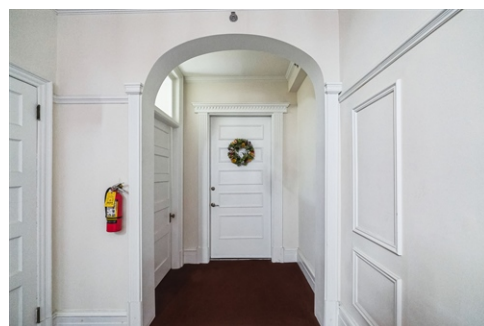
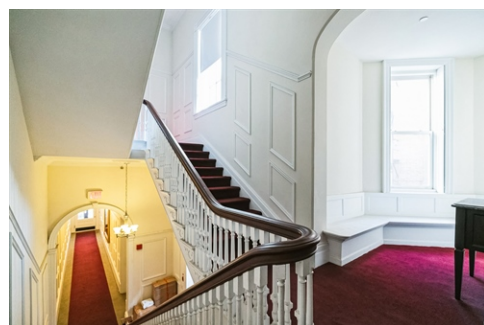
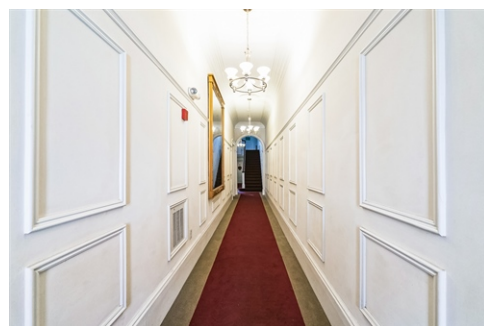
Eric Fox
(267) 625-4504 (Eric Cell)
eric@efoxhomes.com
<http://www.efoxhomes.com>



THE ERIC FOX TEAM

Compass
1430 Walnut Street
3rd Floor
Philadelphia, PA 19102
(267) 435-8015

\$ 785,000



Welcome to this spacious bi-level condo, featuring gorgeous oak hardwood floors, high-end finishes, and natural light pouring in from the east and south-facing windows. Enter the unit through the foyer which is complete with coat closet and plenty of space for a bench or entryway table. The open concept living, dining, and kitchen area is perfect for entertaining, with a gas fireplace and ornate mantle, modern tile accents, and a pantry under the staircase. The kitchen features abundant crisp white cabinets with black granite countertops, an undermount sink with a stainless-steel gooseneck faucet, a 5-burner gas stove with a chimney hood, a French door Samsung refrigerator, a wine fridge, and two peninsulas with end-cap storage, plus a custom nook for a trash can or recycling. There is also a conveniently located powder room on this level, with newer front-loading LG washer and dryer (2021). The extra spacious primary bedroom, located upstairs to the left side of the staircase, features two east facing windows, recessed lighting, a tray ceiling with a modern fan, a huge wrap around walk-in closet including additional storage space. The en-suite bath is a spa-like retreat with dark tile, a dual vanity, a modern Kohler shower faucet system, a built-in towel warmer, heated floors, and a window for natural light. Both the spacious back bedroom and the middle bedroom/office boast crown molding, recessed lighting, modern ceiling fans, and a full double closet with additional storage above. The back

